

WRRRA MEMBER COMPANIES

Bainbridge Disposal
Basin Disposal, Inc.
Basin Disposal of Walla Walla
Basin Disposal of Yakima
Columbia Resource Company
Consolidated Disposal Services
Ed's Disposal, Inc.
Empire Disposal
Excess Disposal Service
Island Disposal
Kent - Meridian Disposal
Lakeside Disposal
LeMay Enterprises
Mason County Garbage
Murrey's Disposal
Naslund Disposal Service
Nooksack Valley Disposal
Olympic Disposal
Peninsula Sanitation Service
PCRCO LLC, dba LRI
Pullman Disposal Service
Recology
Republic Services
Republic Services of Bellevue
Republic Services of Kent
Republic Services of Klickitat County
Republic Services of Lynnwood
Republic Services of Seattle
Rubatino Refuse Removal
San Juan Sanitation
Sanitary Service Company
Silver Spring Organics
Sound Disposal
Stanley's Sanitary Service
Sunshine Disposal & Recycling
Upper/Okanogan Valley Disposal
Waste Connections
Waste Control
Waste Management of WA
WasteWise Methow
Yakima Waste Systems
Zippy Disposal Service

APPLICATION INFORMATION

Questions regarding the scholarship program should be addressed to:

The WRRRA Scholarship Program
Scholarship Management Services
One Scholarship Way, P.O. Box 297
Saint Peter, MN 56082
Telephone: (507) 931-0633
Amanda Bonham:

abonham@scholarshipAmerica.org

For more information regarding the program or to obtain an application, please visit the Scholarship Program page on the WRRRA web site at:

www.wrrra.org



WASHINGTON
REFUSE &
RECYCLING
ASSOCIATION

Scholarship Program

WRRRA Office



4160 6th Ave SE
Suite 205
Lacey, WA 98503
P: (360) 943-8859
F: (360) 357-6958
www.wrrra.org



WASHINGTON
REFUSE &
RECYCLING
ASSOCIATION

Scholarship Program

2019-2020 School



2019-2020 WRRRA Scholarship Program



WASHINGTON
REFUSE &
RECYCLING
ASSOCIATION

Scholarship Program

THE PROGRAM



The Washington Refuse & Recycling Association has established a scholarship program to assist employees and their dependent children who plan to continue education in college or vocational school programs.

This scholarship program is administered by Scholarship Management Services®, a division of Scholarship America®. Scholarship Management Services is the nation's largest designer and manager of scholarship and tuition reimbursement programs for corporations, foundations, associations and individuals. Awards are granted without regard to race, color, creed, religion, sexual orientation, gender, disability or national origin.



ELIGIBILITY

Applicants to the Washington Refuse & Recycling Association Scholarship Program must be:

- Employees or dependent children of employees* of WRRRA Regular member and their affiliated companies, as defined by the Washington Refuse & Recycling Association bylaws.
- Students already enrolled or planning to enroll in a full-time** undergraduate course of study at an accredited two-year or four-year college, university or vocational-technical school. Employees may attend school part-time.

** Dependent children are defined as natural or legally adopted children or stepchildren under the age of 24, living in the employee's household or primarily supported by the employee.*

***Full-time study is defined as full-time enrollment for the entire upcoming academic year.*

APPLICATION DEADLINE: April 30, 2019

AWARDS

If selected as a recipient, the student will receive a \$2,000 award. Up to four (4) awards will be granted each year. Awards are not renewable, but students may reapply to the program each year they meet eligibility requirements.

PAYMENT OF SCHOLARSHIPS

Scholarship Management Services processes scholarship payments on behalf of the Washington Refuse & Recycling Association. Payments are made on August 1st. A check will be mailed to each recipient's home address and is made payable to the school for the student.

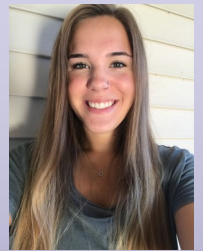
The Washington Refuse & Recycling Association reserves the right to the conditions and procedures of this scholarship program and to make changes at any time, including termination of the program.



2018-2019 SCHOLARSHIP RECIPIENTS



Makayla Krohling
Pacific University
Waste Connections



Courtney Misner
Saint Martin's University
Waste Connections



Nathan Nicholson
University of Washington
Sound Disposal Inc.



Colton Troh
Eastern Oregon University
Republic Services of Klickitat